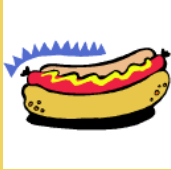


July has National Hot Dog Month



Did you know?

Americans consumed more than 20 billion hot dogs in 2007.

Americans typically consume 7 billion hot dogs between Memorial Day and Labor Day.

Americans will eat 25.9 million hot dogs in major league ballparks—that's enough to stretch from Dodgers' Stadium in Los Angeles to Yankee Stadium in New York City.

On July 4th, Americans will enjoy 150 million hot dogs!

Ninety-five percent of households serve hot dogs.

Overall, outdoor grilling is the preferred method of preparing a hot dog (41%), followed by steaming (31%).

Mustard is the favorite hot dog topping among Americans. Only children and young adults buck the trend, preferring ketchup.

Nearly half of all Americans eat hot dogs at least once a month.

Sausages are one of the oldest forms of processed food. It was mentioned even in Homer's *Odyssey* as far back as the 9th Century B.C. The origin of the "Hot Dog" has some controversy, however Frankfurt, Germany, is traditionally credited with the place of its birth.

Summer Fun!



Odds and Ends from Orion:

- July is normally a slower month for us, so we turn our attention on some internal projects we have planned. In the last few months we have gained two new certifications from Sage. We are now certified on the new MAS90 Extended Enterprise Suite edition of MAS90 and MAS200 which integrates the SAGE CRM module and Fixed Assets into standard MAS90. We have also become certified on the Peachtree Quantum edition version of the Peachtree, with the hope of providing an alternative for those MAS90 users on older levels who are planning to move off of MAS90 to a lower TCO (total cost of ownership) software.
- For those on Level 4.1, Level 4.2 and Level 4.3. Sage has been consistently releasing a new service update for 4.1, 4.2 and 4.3 on a monthly/bi-monthly basis. Level 4.1 is on service update number 23, Level 4.2 is on service update number 25 (both of these are their Microsoft Vista compliant releases) and 4.3 is on service update number 13. These updates are available to you as part of your Client Care subscription with Sage. If you need help installing any of the service updates or have any questions, please give us a call.

Till Next Month,

How to resolve an Out of Balance in Bank Reconciliation?



The following may help to determine the out of balance register:

The **Bank Transaction Recap Report** lists checks, deposits, and adjustments in chronological order. This report can be printed at any time before the Bank Reconciliation file is purged.

This report provides an overall picture of transactions for a specified range of dates. Information can be printed for either one or a combination of transaction types and include only cleared transactions, outstanding transactions, or all transactions. The transaction date, type, source, check number, check type, reference, comment/payee name, whether the transaction has been cleared, the transaction amount, and the bank balance are printed for each bank code. In addition, the number of transactions and a total amount are printed for each transaction type selected.

The **Bank Reconciliation Register** lists all transactions entered for a specified date range and provides a reconciliation summary.

This register serves as an audit record of bank account activity and includes checks, deposits, and adjustments recorded automatically through the General Ledger, Accounts Payable, Accounts Receivable, Client Write-Up, Payroll, Purchase Order, and Time and Billing updates, and all information entered manually using Check, Deposit & Adjustment Entry. The Bank Reconciliation Register is normally printed following the use of Reconcile Bank.

The reconciliation summary at the end of the register totals all outstanding checks, deposits, and adjustments. The calculated book balance reflects the cumulative system balance through the ending transaction date specified.

Normally, these two reports balance. However, if there is a future entry that is marked

Nat'l Hot Dog Month continued

The name "hot dog" also comes to us with some controversy. Culinary historians, point to college magazines where the word "hot dog" began appearing in the 1890s. The term was current at Yale in the fall of 1894, when "dog wagons" sold hot dogs at the dorms. References to dachshund sausages and ultimately hot dogs can be traced to German immigrants in the 1800s. These immigrants brought not only sausages to America, but dachshund dogs. The name most likely began as a joke about the Germans' small, long, thin dogs. In fact, even Germans called the frankfurter a "little-dog" or "dachshund" sausage, thus linking the word "dog" to their popular concoction.

Others say the term "hot dog" was coined in 1901 at the New York Polo Grounds. One cold April day, concessionaire Harry Stevens (his company is still in business) was losing money with ice cream and ice cold soda. He sent his salesmen out to buy up all the dachshund sausages they could find, along with an equal number of rolls. In less than an hour his vendors were hawking hot dogs from portable hot water tanks with "They're red hot! Get your dachshund sausages while they're red hot!"

In the press box, sports cartoonist Tad Dorgan was nearing his deadline and desperate for an idea. Hearing the vendors, he hastily drew a cartoon of barking dachshund sausages nestled warmly in rolls. Not sure how to spell "dachshund" he simply wrote "hot dog!" The cartoon was a sensation--and the term "hot dog" was born.

RESOLVE OUT OF BALANCE BANK REC CONTINUED FROM PAGE 1

cleared, they will not balance. This will also be the case if something is not marked cleared, review the recap report and look for dates once everything marked cleared is correct and the Bank Reconciliation register is still out of balance. On the Bank Transaction Recap report also check the Beginning Balance (do not enter a start date when running the report) and make sure it is the same as the Bank Statement Ending balance for the last month that was purged from Bank Reconciliation, if it does not the Register cannot be balanced.

Use the following steps to correct the Beginning Balance:

1. Calculate the difference between the Bank Statement Ending Balance (for the last month that was purged in Bank Reconciliation) and the Beginning Balance on the Bank Transaction Recap Report.
2. In Main / Bank Code Maintenance write down the amount in the Current Balance field
3. Add or subtract the amount from step 1 (depending if the Bank Recap Report is higher or lower than the Bank Statement) to the amount in the Current Balance and click 'Accept'
3. Re-run the Bank Transaction Recap Report (without entering a starting date) and verify the Beginning Balance equals the Bank Statement Ending Balance.

New Microsoft Windows 7 Operating System

Here are a few options to consider for the upcoming release of the Microsoft Windows 7 operating system due out in October 2009.

Microsoft has said that it will offer upgrade options for users to move from Windows XP to Windows 7, but to be clear, those are only for purchasing software licenses. There will be no software upgrade path.

"I can confirm that customers will be able to purchase upgrade media and an upgrade license to move from Windows XP to Windows 7 - however, they will need to do a clean installation of Windows 7," a Microsoft spokesperson confirmed to the media. "This requires the user to back up their data, install Windows 7, re-install the programs and restore their data."

"For PCs running Windows Vista customers have the option of an in-place upgrade of Windows 7 keeping their data and programs intact or to perform a clean install of Windows 7," added the rep.

Here are the hardware specs for running Windows 7

If you want to run Windows 7 on your PC, here's what it takes:

*1 gigahertz (GHz) or faster 32-bit (x86) or 64-bit (x64) processor
1 gigabyte (GB) RAM (32-bit) or 2 GB RAM (64-bit)
16 GB available hard disk space (32-bit) or 20 GB (64-bit)
DirectX 9 graphics device with WDDM 1.0 or higher driver*

*Windows Touch and Tablet PCs require specific hardware
BitLocker requires Trusted Platform Module (TPM) 1.2
BitLocker To Go requires a USB flash drive*

Windows XP Mode requires an additional 1 GB of RAM, an additional 15 GB of available hard disk space, and a processor capable of hardware virtualization with Intel VT or AMD-V turned on.

So for those of you on older hardware platforms the jump to Windows 7 may require an investment in new hardware as well (please let us know if you need help quoting or configuring future hardware purchases, we are HP and Dell authorized and would be happy to help). If you are considering new hardware now, Microsoft is allowing new hardware sales of Vista to automatically receive the upgrade for free when Windows 7 comes out.

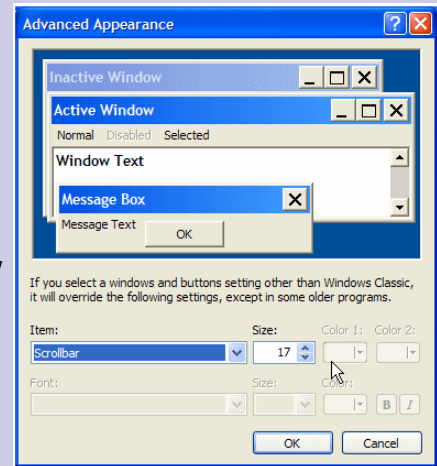
Windows Tip

Make Scrollbars Bigger (XP)

If you find that the scrollbars in all the windows are too narrow, check this out. You can make those scrollbars just about as big as you want. To change the size of your scroll bars, do this:

Right-click the desktop and choose Properties. When the Display Properties dialog box opens, click the Appearance tab. In the Display Properties dialog box, click the scrollbar. In the Item list box, you should now see the word Scrollbar. Next, locate the spin box labeled Size and click the up arrow until the scrollbar size looks more like what you need. Now, click OK to close the dialog box and record your changes.

The newly sized scrollbars now appear in all your Windows programs.

**Exciting Summer Promotions from SAGE!****Simplify, Take Control and Reduce Outsourced Costs with the Sage MAS 90 and 200 Do It Yourself Payroll bundle!**

Lower your costs, access data faster and easier -- now is the time to take back payroll with the Sage MAS 90 and 200 Payroll bundle. Purchase Sage MAS 90 or 200 Payroll and Direct Deposit for only \$1,705 -- a savings of \$475!* Plus, add Sage KnowledgeSync Professional for \$0 (\$399 annual service fee required). *\$1,705 promotional price applies to the product portion of the sale only. Regular maintenance applies.

Here's a link for more information on KnowledgeSync (<http://www.sageknowledgesync.com/index.html>)

**Migrate to Sage MAS 90 or 200 Extended Enterprise Suite and receive 0% financing on the upgrade fees!**

For a limited time only, Sage MAS 90 and 200 customers can migrate to Sage MAS 90 or 200 Extended Enterprise Suite and receive 0% financing on the upgrade fees. Sage will reduce the SLP on the order by the appropriate discount (7% for 12-months, 10% for 24-months, or 14% for 36-months) to cover the cost of the financing. Promotion applies to the product portion of the sale only and not to maintenance. Promotion cannot be combined with other promotions and applies only to transactions of \$10,000 or greater.

Here's a link for more information on MAS90 EES (http://www.sagemas.com/smlp/promos/extended_enterprise_suite/default.aspx)

Sage Spring Promotions valid through September 30, 2009. Please contact Jim Steele for more information.

We encourage you to provide us with your feedback, comments and suggestions on how we can better serve your business needs. Contact us at **248-893-1060** or email to jimsteele@orionbas.com

Super Summer Savings from Orion!

Got A Project this summer?

Been putting off your upgrade or service pack(s) installation?

Well now is the perfect time to schedule Orion for projects and tasks you've been putting off! For the months of July and August, we are offering our clients a special discount for buying blocks of time. Our normal hourly rate will be discounted 15% when you buy blocks of time in 5 hour increments.

The pre-paid hours will not expire and will be held on your account. Use them for Orion services, refresher training, implementation, custom reports, hardware installation, network troubleshooting, whatever you like!

Offer good through August 31, 2009.



HARDWARE SPECIAL!

If your company is planning on staying on Windows XP for now and you need to replace some older MAS90/200 workstations, here's a great deal on an HP Refurbished/Excess New PC!

HP dc5850 XPV PhenomX3 8750B 2.4GHz 160GB SATA 2GB DDR2 800 DVDRW(LS) Rmkt MT PC with 19 inch Flat Panel Monitor!

Specifications:

SUMMER SIZZLING SPECIAL PRICING OF \$619.00 EACH

Windows Vista® Business 32 with downgrade to Windows® XP Professional pre-installed

AMD Phenom X3 8600B processor (2.3 GHz, 1.5 MB Dedicated L2 cache, 2 MB Shared L3 cache, HT bus 3.0)

2 GB 800 MHz DDR2 SDRAM

160 GB 7200 rpm SATA 3.0 Gb/s NCQ, Smart IV

SATA SuperMulti LightScribe DVD Writer

Integrated ATI Radeon 3100 Graphics

Broadcom Gigabit Ethernet

HP Standard Warranty - 1 year onsite, next business day

HP L1910- 19 inch TFT Flat Panel Monitor (warranty does not include monitor)



Add Microsoft Office 2007 Standard (Outlook, Word, Excel and PowerPoint) for \$299.00

****Promotional offers and prices are for a limited time or until supply lasts.*

Prices and configurations are subject to change without notice and do not include shipping charges or applicable taxes. HP Refurbished/Excess new units come with the standard HP Warranty and can be extended if you wish to purchase a Warranty extension Care Pack. Call Jim Steele at 248-893-1060 to place an order.

We encourage you to provide us with your feedback, comments and suggestions on how we can better serve your business needs. Contact us at **248-893-1060** or email to **jimsteele@orionbas.com**