

Jan has National Pie Day

National Pie Day is Jan 23rd



Did you know?

Pie has been around since the ancient Egyptians. The first pies were made by early Romans who may have learned about it through the Greeks. These pies were sometimes made in "reeds" which were used for the sole purpose of holding the filling and not for eating with the filling.

The early pies were predominately meat pies. Pies (pies) originally appeared in England as early as the twelfth century. The crust of the pie was referred to as "coffin". There was actually more crust than filling. Often these pies were made using fowl and the legs were left to hang over the side of the dish and used as handles. Fruit pies or tarts (pasties) were probably first made in the 1500s. English tradition credits making the first cherry pie to Queen Elizabeth I.

Pie came to America with the first English settlers. The early colonists cooked their pies in long narrow pans calling them "coffins" like the crust in England. As in the Roman times, the early American pie crusts often were not eaten, but simply designed to hold the filling during baking. It was during the American Revolution that the term crust was used instead of coffin.

Over the years, pie has evolved to become what it is today "the most traditional American dessert". Pie has become so much a part of American culture throughout the years, that we now commonly use the term "as American as apple pie."

Cold Winter Warm-up!!!



Odds and Ends from Orion:

- Happy New Year to all as we move through January. We've had a mild winter so far, but in the last few days we are back to the bitter cold we know as Michigan winters. Just relax and have a nice cup of something warm and before you know it the Tigers will be in Lakeland, FL for spring training.
- If you use MAS90's Payroll module, you should be aware that there is a new Tax Table update and an end of year Interim Release Disk (IRD). If you have not already installed these, please call us for more information or help on updating.
- We are looking for some feedback on starting a series of on-line webinars on MAS90 application areas and/or modules. Once a month, an hour long on-line webinar to cover general training or upgrade changes on a MAS90 application area or module. Please let us know, one - if you would be interested? and two - any modules or topics you would like to see?



Till Next Month,

SAGE Business Care Changes for 2012

Effective March 1, 2012, the Bronze plan will be eliminated as an option for new customers and for existing customer renewals. Existing customers that expire on March 1, 2012, and later, will receive renewal notices priced at the Silver level.

The Sage 100 ERP (formerly Sage ERP MAS 90 and 200) Silver plan will be priced at 21%.

There is a One-Time Transition Option for customers that do not wish to renew at the Silver level. This one-time transitional offer will be made available to renew on a Bronze plan at a new Bronze price without phone support (no multiyear subscriptions) by February 28, 2013.

If you are not familiar with these support options, please see our November email sent out to our newsletter list outlining the changes in Sage's Software Maintenance Plans.

Don't forget as part of Sage's rebranding strategy, MAS90 and MAS200 will now be referred to as:

Sage ERP MAS90 and Sage ERP MAS200 are becoming Sage 100 ERP

Sage ERP MAS90 is becoming Sage 100 Standard ERP

Sage ERP MAS200 is becoming Sage 100 Advanced ERP

(Don't worry, you can still call it MAS90 and MAS200 around us, it's etched on our brains too).

If you have any questions or concerns, please give us a call at 248-893-1060. Please keep in mind that we are just the messenger in this situation. If you would like to talk to someone at Sage, let me know and we'll do what we can to help set that up.



Nat'l Pie Day continued

A survey by the American Pie Council and Crisco found that apple pie is the favorite flavor among one out of four Americans, followed by pumpkin, chocolate, lemon meringue and cherry

An overwhelming 76 percent of Americans prefer homemade pie over pie from a bakery or pastry shop, restaurant, diner or supermarket

The average American eats six slices of pie per year

Before pie was America's favorite dessert, fruit pies were commonly eaten as part of breakfast in the 19th century

Pumpkin pie was first introduced to the holiday table at the pilgrim's second Thanksgiving in 1623

Other names for a pie are pastie, oggie, piraski, piragie, patty and pierogi. More common names include: streusel, tart, turnover and crumble

The term 'upper crust' refers to early America when the economy was difficult and supplies were hard to come by. Only affluent households could afford ingredients for both the upper and lower crusts of a pie; thus, the term 'upper crust' was born

The first pie recipe was published by the Romans and was for a rye-crust goat cheese and honey pie

18% Men who say their wife makes the best homemade pie, while only 2% Women say their husband makes the best homemade pie

What do I think? come on ladies, give up some props for your men who make pies. My favorite? Pecan Pie!

Sage FRx Conversion Utility

Let me preface this article by saying that Sage has made a statement that we are getting this release in February and that we have not yet received our copy. We will keep you posted on this release.

The FRx Conversion Assistant Utility is scheduled for release in February to help business partners and consultants convert customers' FRx Catalogues to Sage ERP MAS Intelligence Reports.

The FRx Conversion Utility Assistant will:

- ◇ Convert native columns like Actual/Budget/YTD columns
- ◇ Convert calculated columns that involve basic arithmetic
- ◇ Proprietary FRx formulas will not be converted
- ◇ Map row formats to Report Designer row structure
- ◇ Duplicated accounts on row format not supported
- ◇ Limited support for complex 'Related Rows' formulas
- ◇ Convert Reporting Trees to the reporting tree structure implemented in the Report Designer.
- ◇ Caters for company, tree unit name and account mask
- ◇ Convert Catalogues to Reports in the Report Manager, if the Catalogue's column layout and the row format can both be converted
- ◇ For a sneak peek visit FRx Conversion Assistant recording.

Please note that these new capabilities are only available on Sage's 4.5 release. This release builds upon Intelligence's capabilities. New features and functionalities for Sage ERP MAS Intelligence allows you to create trend reports, attach Reporting Trees to Report Designer layouts, and distribute meaningful information in familiar Microsoft® Excel. To Learn more, visit <http://www.sagemas.com/intelligence>

Security Tip for Email

Just a common sense reminder on general email security. Spam email is just a part of life now and should be deleted or filtered as junk.

That said, the most important thing is to **NEVER take action based upon instructions from an e-mail**, especially when you are asked to log in and verify information. No legitimate business will cancel or deactivate an account based solely upon e-mail notification. Moreover, customers should never be asked to "download" anything in order to complete a verification request... that's a dead giveaway that the attachment is spam/virus/malware related.

If in doubt, you can call the business or access your account directly through your browser, using the URL originally provided by the vendor (never through an e-mail link). Any account related notices are usually available and/or displayed when you log into your account online through your web browser.



MAS90 Tip

How to find what version of MAS90 you are using?

Follow these steps →

From the top menu on your MAS90 Launcher, look for the Help menu option and go to "About MAS 90"

This will bring up a screen showing you what Level, Service Pack and Product Update you are on.

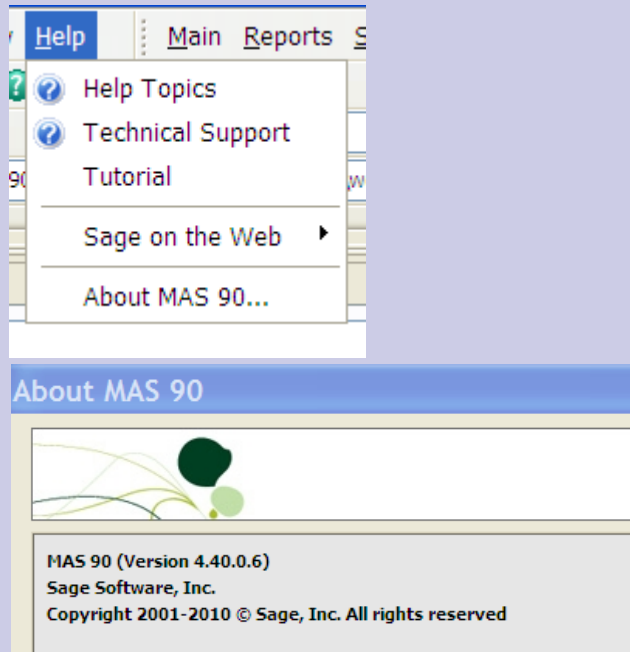
The latest Product update for recent levels are -

Level 4.3 - product update 23

Level 4.4 - product update 8

Level 4.5 - product update 2

Don't forget, these are important updates and you should stay on top of installing them!



Want to integrate Sage MAS90 and ACT! Contact management software?

Greytrix, a Sage Development Partner has a Link for ACT! to MAS90. The GUMU ACT! Link is a real time integration between your ACT! and Sage MAS 90/200. It also includes a utility so you can easily migrate your existing ACT! MLink to the new GUMU ACT! Link. It is available for ACT 2010/2011/2012 and Sage MAS 90/200 4.4 and 4.5

Key features of integration:

Customer Import: Import/synchronize Sage MAS 90/200 customers to create companies and contact in Sage ACT!.

Vendor Import: Import/synchronize Sage MAS 90/200 vendors to create companies and contact in Sage ACT!.

Aging: View AR/AP Aging as of any date.

Sales Register: View Invoices, Sales Orders, Customer Item Purchase History, Item Sales of MAS 90/200 customer linked with Sage ACT! Company. You can even drill down to transaction details including line items, payment details etc.

Purchase Register: View Invoices, Purchase Orders, Item Purchases of MAS 90/200 vendor linked to Sage ACT! Company. You can even drill down to transaction details including line items and payment details etc.

Please contact us for more information or visit www.greytrix.com/product-2-GUMU for Sage CRM ACT!

MAS 90 200 Sales Order List at MAS Register in ACT!

Business Card		Address	
Company	A To Z Carpet Supply	Address 1	1805 Newport Blvd
Phone	(714) 555-2233	Address 2	
Fax		City	Newport Beach
Toll-Free		State/ZIP	CA 92661
Web Site		Country	United States of Amer
Status		Referred By	
ID/Status			

Number	Type	Order Date	Ship/Expte	Customer PO No.	Ship To	Order Amount	Last Inv/Ord
0000238	Standa...	3/19/2010	3/19/2010			89.46	
0000240	Standa...	3/19/2010	3/19/2010			89.04	
0000241	Standa...	3/19/2010	3/19/2010			89.04	
0000242	Standa...	3/19/2010	3/19/2010			89.04	
0000243	Standa...	3/19/2010	3/19/2010			89.04	
0000244	Standa...	3/19/2010	3/19/2010			89.04	
0000245	Standa...	3/19/2010	3/19/2010			89.04	
0000246	Standa...	3/22/2010	3/22/2010			1,181.80	

We encourage you to provide us with your feedback, comments and suggestions on how we can better serve your business needs. Contact us at **248-893-1060** or email to jimsteele@orionbas.com