

Super Bowl Trivia

Did you know?



The NFL awarded the 2010 Super Bowl — Super Bowl XLIV — to Miami and the championship game will be played February 7, 2010 at Dolphin Stadium.

The Super Bowl is the top at-home party event of the year, surpassing New Years Eve.

Super Bowl Sunday is the second largest day of food consumption behind only Thanksgiving.

An estimated 14,500 tons of chips and 4,000 tons of popcorn are eaten on Super Bowl Sunday.

The California Avocado Commission says that on Super Bowl Sunday, Americans scarf down eight million pounds of guacamole.

Most popular choices of takeout/delivery items on Super Bowl Sunday are No. 1 = pizza, chicken wings at No. 2 and subs or sandwiches in 3rd place.

Sales of antacid increase 20 percent the day after Super Bowl Sunday.

Six percent of Americans will call in sick the day after Super Bowl Sunday.

An estimated 50 million American women will watch the Super Bowl.

The average number of people at a Super Bowl party is 17.

Super Bowl Sunday is the biggest winter grilling day of the year.

My Favorite?, Chicken Wings with hot sauce (Frank's Red Hot of course).

Happy New Year!



Odds and Ends from Orion:

- Wishing all a prosperous and Happy New Year! This month's newsletter is chocked full of news and information on MAS90!
- Sage has some great incentives for Off-Plan customers (those that have let their Sage annual Software Maintenance Plan lapse) to get back on the basic Sage Maintenance. Call us if you would like to look at the benefits and cost to get back on plan and start talking about installing the new level.
- For those on Level 4.1, Level 4.2 and Level 4.3. Sage has been consistently releasing a new service update for 4.1, 4.2 and 4.3 on a monthly/bi-monthly basis. Level 4.1 is on service update number 23, Level 4.2 is on service update number 26 (both of these are their Microsoft Vista compliant releases) and 4.3 is on service update number 17. These updates are available to you as part of your Client Care subscription with Sage. If you need help installing any of the service updates or have any questions, please give us a call.



Till Next Month,

Sage's Upcoming Release of Level 4.4

We are still expecting to see Sage MAS 90 & MAS 200 version 4.4 in the first quarter of 2010. This version will include upgrades for Inventory, Purchase Order and Bill of Materials. You can review a detailed whitepaper with the new features on our website at www.orionbas.com/sage-business-accounting-software-support.php



Here is what I know

MAS90 Version 4.4 will be released in early February. Once we get our copy, we will test it and give you our feedback, based on other beta-sites feedback, we expect to start scheduling upgrades in mid to late February. Level 4.4 will support Windows 7 Professional and Ultimate 32bit and 64bit versions. MAS90 will be supported in the WOW64 (Windows on Windows) mode. This will require you purchase Windows 7 hardware that supports WOW64 on x86-64 (x64) architecture.

Here is what I heard is going to happen

In March, Sage will release a Service Update 18 for Level 4.3, that will provide support both 32 bit and 64 bit versions of Windows 7. Prior versions of MAS90 will not be supported on Windows 7.

Please let us know if you have any questions about upgrading concerning your version of MAS90 and your hardware/network configuration.

End of Year Payroll

Every January we get many Year End Payroll questions. Here a short cheat sheet to make sure you've done everything.

1. Install the Q4 2009 IRD (interim release disk)
2. Copy Company in MAS90 and create your 2009 Payroll Company
3. Run your W-2's and government reports in your 2009 Payroll Company
4. Download the Q1 2010 Tax Table Update (TTU) for Payroll
5. Go into your "Live" company and change your MESC State Unemployment Insurance Rate.
6. Begin Processing your 2010 Payroll.
7. Live Long and Prosper and call Orion if you didn't do all these things.



*you must be current with your Sage software maintenance for access to the Sage Support site to download IRD's and current year TTU's.

Spotlight on Sage Extended Solutions!



Sage is retiring many Extended Solutions Titles!

Sage will begin to phase out the Sage MAS 90 and 200 Extended Solutions department, which was created to address specialized needs of unique businesses. This phase-out process includes incorporating the main features and functionality of many of the top Extended Solution titles into the core product. That additional functionality will be delivered over the next several releases and product updates. This benefits MAS90/200 customers in many ways:

- Adds more value for Sage MAS 90 and 200 customers -- most popular features and functionality will continue to be incorporated into core products over the next few releases and product updates
- Reduces "nickel and diming" -- customers will see reduced maintenance charges on their annual renewal date when their Extended Solutions titles are no longer added in, resulting in a lower cost of ownership
- Simplifies and gives customers more flexibility -- customers will be able to work through you to get the needed customization, when they want them

Customers who own titles that will be retired, and not incorporated into the core product, will begin to see those Extended Solution title(s) drop off their renewal notices. As of November 1, 2010, we will no longer support any retired Extended Solutions titles. Please make note that the 2009 year-end updates will be the last year-end updates for those titles.

Customers who own the select group of titles that contain features and functionality that will be phased into Sage MAS 90 and 200 ERP over the next few releases will continue to see their title(s) on their renewal notices. Also, they'll continue to receive support until such time as the features and functionality are incorporated into the core product. Once their title has been incorporated into the core product, they will see that title drop off their renewals.

To Summarize:

- 1) Sage will continue to sell a select group of Extended Solutions titles that are compatible with Sage MAS 90 and 200 version 4.3 - see link http://www.sagemas.com/products/sagemas90_mas200/extended_solutions/
- 2) When the main features and functionality of those titles are incorporated into the product, the customers will no longer be charged software maintenance in their annual renewal.
- 3) Customer's who own the retired Extended Solutions titles will see them removed from renewals.
- 4) For new sales and existing upgrades of the retired Extended Solutions titles, customers will purchase them through Orion working with a MAS-ter Developer.

For further details or questions, please contact Orion.

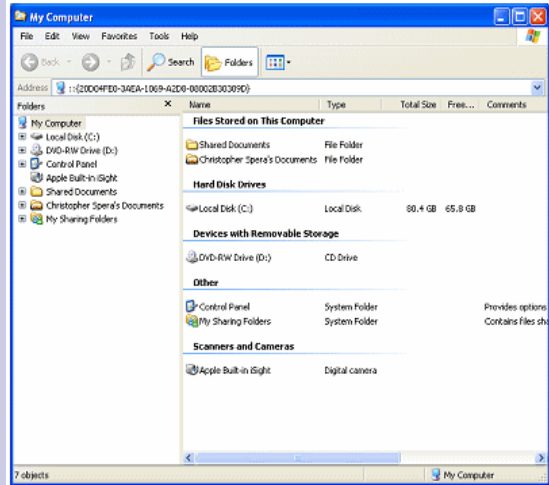
Windows Tip - OPEN Windows Explorer with no Expanded Drives or Folders

If you'd like to open Explorer with no expanded drives or folders. The only way we've found to do this is to place an Explorer shortcut on your desktop.

Right-click the shortcut and choose Properties. When Properties opens, click the Shortcut tab. Click in the Target entry box and paste in the following line:

```
C:\WINDOWS\EXPLORER.EXE /e,/root,::{20D04FE0-3AEA-1069-A2D8-08002B30309D}
```

Click OK to close the dialog box and save your addition. Now double-click the shortcut, and you'll get an Explorer view of My Computer--with none of the folders expanded.



Exciting Winter Promotions from SAGE!

On and Off Plan customers with a v3.71 Value Plan who migrate from Sage MAS 90 and 200 v3.71 to Sage MAS 90 and 200 v4.4 or Extended Enterprise Suite will receive a \$1,000 Plan reinstatement credit. *

Now is the time for V3.71 value plan customers to renew their Sage maintenance plan and move to the current version of Sage MAS 90 or 200 or Extended Enterprise Suite. Customers who signed up for the v3.71 Value Plan have a credit of \$1,000 waiting for them. Don't let this opportunity pass by!

** The \$1,000 credit will be applied to the new Sage service plan upon reactivation. This offer cannot be combined with any other offer. Offer expires 3/31/2010.*



On and Off Plan customers with an existing CRM product can trade in their eligible stand-alone CRM solution and receive 25% off migration to Extended Enterprise Suite *

Sage MAS 90 and 200 customers who are using an eligible stand-alone CRM solution can trade it in and save 25% on migration to Extended Enterprise Suite. * *

*Eligible trade-in solutions include Salesforce.com, SugarCRM, Microsoft Dynamics, SalesBoom, RightNow CRM, Oracle CRM, Net-SuiteCRM, SAP CRM, Epicor Sales Management, and GoldMine. Proof of purchase prior to December 1, 2009, is required. All eligibility is subject to approval.

**This offer does not apply to Sage maintenance or support fees and cannot be combined with any other product offer. To take advantage of this offer, customers must have a current Sage Maintenance Plan or their Plan can be renewed at the time of purchase. The customer must have owned their Sage ERP system for at least six months.



Sage Winter 2010 Promotions valid through March 31, 2010. Please contact Jim Steele for more information.

Exciting Winter Promotions from SAGE—Continued!

Extended - On Plan customers can enroll in Sage Payment Solutions and get a free Credit Card Processing module (\$1,100 value) *

In today's economy, it is crucial for businesses to take measures to improve and promote healthy cash flow. Sage MAS 90 and 200 customers who enroll in Sage Payment Solutions will be eligible to have the cost of the Credit Card Processing module waived - a savings of \$1,100!

* Valid proof of enrollment in Sage Payment Solutions is required. Regular maintenance applies. This offer does not apply to Sage maintenance or support fees. This offer cannot be combined with any other product offer. To take advantage of this offer, the customer must have a current Sage Maintenance Plan and have owned their Sage ERP system for at least six months.



Extended - On Plan customers save \$475 when purchasing Payroll and Direct Deposit together

Simplify, take control, and reduce outsourced costs with the Sage MAS 90 and 200 **Do It Yourself Payroll Bundle**. Lower your costs, access data faster and easier. Now is the time to take back payroll with the Sage MAS 90 and 200 Payroll Bundle. Purchase Sage MAS 90 or 200 Payroll and Direct Deposit for only \$1,705, a savings of \$475.*

* Promotional price applies to the product portion of the sale only and regular maintenance applies. This offer does not apply to Sage maintenance or support fees and cannot be combined with any other product offer. To take advantage of this offer, the customer must have a current Sage Maintenance Plan and have owned their Sage ERP system for at least six months.

Sage Winter 2010 Promotions valid through March 31, 2010. Please contact Jim Steele for more information.

HARDWARE SPECIAL!

Smart Buy- HP Compaq dx2400 Microtower with 19 inch monitor



Price:

\$ 809.00

- [HP dx2400 Microtower](#)
- [Genuine Windows® 7 Professional 32 bit](#)
- 300W ATX power supply
- [Intel® Pentium® Dual-Core E6300 processor \(2.80 GHz, 2 MB L2 cache, 1066 MHz FSB\)](#)
- [Intel® G33 Express](#)
- 2 GB DDR2 800 MHz non-ECC (1 x 2 GB DIMM)
- 250 GB 7200 rpm SATA 3.0 Gb/s NCQ SMART IV
- [Integrated Intel® Graphics Media Accelerator 3100](#)
- [16X SATA SuperMulti LightScribe DVD+/-RW](#)
- No Floppy Drive
- HP PS/2 Standard Keyboard
- HP USB 2-Button Optical Scroll Mouse
- [Realtek ALC888S High Definition Audio Codec](#)
- [Integrated Realtek 8111C-GR 10/100/1000 Ethernet](#)
- 3 year Warranty 9X5 Next business day on-site coverage, desktop only - 3 years.
- HP Backup and Recovery Manager Software included
- Mozilla Firefox for HP Virtual Solutions
- HP Credential Manager
- 2007 Microsoft® Office Ready (60 day trial)
- McAfee Total Protection - Small Business (60 day trail)
- HP Promo L1911 19-inch LCD Monitor
- Promo - LCD Speaker Bar (black)

IF YOU ARE GETTING READY FOR
THE JUMP FROM WINDOWS XP
PROFESSIONAL TO WINDOWS 7
PROFESSIONAL!

ASK ORION FOR A QUOTE
TO UPGRADE YOUR
PC'S / NETWORK.

WE ARE HP/COMPAQ AND DELL
AUTHORIZED DEALERS!

We encourage you to provide us with your feedback, comments and suggestions on how we can better serve your business needs. Contact us at **248-893-1060** or email to jimsteele@orionbas.com