

August has National Assistance Dog Day



Did you know?

National Assistance Dog Day on August 9, 2007, created in recognition of all the devoted, hardworking assistance dogs helping individuals mitigate their disability-related limitations. Assistance Dogs transform the lives of their human partners with debilitating physical and mental disabilities by serving as their companion, helper, aide, best friend and close member of their family.

Assistance Dogs can be from a variety of breeds including, but not limited to: Labrador Retrievers, Golden Retrievers, Standard Poodles, as well as shelter dogs. These specially trained dogs perform many tasks for their partners with disabilities and are classified in the following ways:

Guide Dogs – Assist people with vision loss leading these individuals around physical obstacles and to destinations such as crossing streets, entering or exiting doorways, elevators and stairways

Service Dogs – Assist people with disabilities with walking, balance, dressing, retrieving and carrying items, etc...

Hearing Alert Dogs – Alert people with a hearing loss

Medical Alert/Medical Response Dogs – Alert or Respond to oncoming medical conditions, such as heart attack, stroke, diabetes, epilepsy, etc...

Summer Fun!



Odds and Ends from Orion:

- August is normally busy with people taking their vacation time before getting the kids ready for back to school. Some people try getting in “those things that you have to do each summer or else you can’t say you really had a great summer”, like having a big pool party or going to beach or going camping. For me, it’s a all day motorcycle ride out in the country.
- SAGE is listening! Here’s a great link to put in a **MAS90 product enhancement request** (<http://ideascopeanywhere.com/sagemas/frmSubmitIdea.aspx>). For example, here’s one I get a lot—Allow users to color code separate company screens so that multiple companies don’t look alike. How about you? Here’s where you can post it for Sage.
- For those on Level 4.1, Level 4.2 and Level 4.3. Sage has been consistently releasing a new service update for 4.1, 4.2 and 4.3 on a monthly/bi-monthly basis. Level 4.1 is on service update number 23, Level 4.2 is on service update number 25 (both of these are their Microsoft Vista compliant releases) and 4.3 is on service update number 13. These updates are available to you as part of your Client Care subscription with Sage. If you need help installing any of the service updates or have any questions, please give us a call.

Till Next Month,

Wise Owl Advice for MAS90 tasks?

After reviewing our support notes for the past few months, here are list of some of the top issues we’ve responded to and what to do (or not to do) to avoid them.



1. **Merging in MAS90**
If you plan on using the merge, delete or renumber feature in MAS90 on your data, be a wise owl by first doing either a back-up of your MAS90 folder or do a copy company procedure and create a back-up of the company data (remember everyone needs to be out of MAS90 when you do this). There is no “un-merge” option once you use this function.
2. **Adjustments**
Do not make adjustments to Accounts Receivable, Accounts Payable, or Inventory through the General Journal as this will cause the reports in those modules to go out of balance to your General Ledger. Always make those adjustments through data entry for the module.
3. **Business Insights Explorer**
You can add fields to you Business Insights Explorer by going to the view you want to add to and then clicking on Edit > Column Settings then the add button and choose your field to add to the view.
4. **AP aging doesn’t match the A/P G/L Balance**
A tip to remember. In the new 4.0 standard if you fail to update the Daily Transaction Register (DTR) when you initially post, the next time you post the transaction WILL NOT be picked up at the module level. You would need to go into the GL and run the DTR from there. It could be that the GL was never updated for some transactions and the data is still in the file waiting. Go into the GL, Main, Daily Transaction Register and see if anything shows up when you attempt to run the report.

Nat'l Assistance Dog Day continued

Fun Facts about The Guide Dog Foundation (GDF)

GDF breeds its own dogs including Labrador Retrievers and Golden Retrievers.

Guide Dogs are allowed to go everywhere that the public is allowed to go. This includes things such as restaurants, taxicabs, hotels, planes, etc.

Any dog sponsor that makes a \$6000 donation to the Guide Dog Foundation can select the name of a puppy.

It costs them more than \$25,000 to complete the training for only one guide dog.

Guide dogs are provided by the Guide Dog Foundation and are free of charge.

Guide dogs are trained to find and follow a clear path, go around obstacles and stop at curbs. They are also taught to determine when it is unsafe to proceed.

Guide dog puppies are trained in groups of 6-8 dogs.

There are almost 60 schools in 26 countries.

The Seeing Eye is the original name of the Guide Dog Foundation.

Guide dogs work in the foundation services for at least 8-10 years.

Most guide dog schools will consider for training any legally blind adult who can use a guide dog safely and effectively, but usually the minimum age is around fifteen. There is no upper age limit.

So the next time you see a hardworking guide dog, give him/her a "paws" up!

Upcoming MAS User Academy 2009

Our annual fall users conference is just around the corner and we would love to see you there!

We realize that everyone is struggling through in this tough economy, so this year we're offering 40% off our normal attendance fee.



Orion cordially invites you to join us for the 2009 MAS Users Academy. In our 7th year, this is a great opportunity to participate in an event designed especially for you, the end user. Come and spend a day learning about MAS90; what's new in the latest release, what's the future plan for the software, classes on specific topics and most important, a chance to network with other MAS90 users like yourself. We are offering two session tracks that you can pick from: application oriented and technical oriented. The materials presented in each session will be provided to every attendee, so you won't miss a thing!

WHEN: Thursday, September 24th, 2009
 TIME: 8:00 am to 3:45 pm
 WHERE: Embassy Suites Hotel in Southfield, MI
 FEE: Academy fee is ~~\$100~~ \$ 60 per person

Registration is required. Please call Jim Steele at 248-893-1060 to register or email to jimsteele@orionbas.com

Discounts available for companies registering more than one person.

This year's sessions.

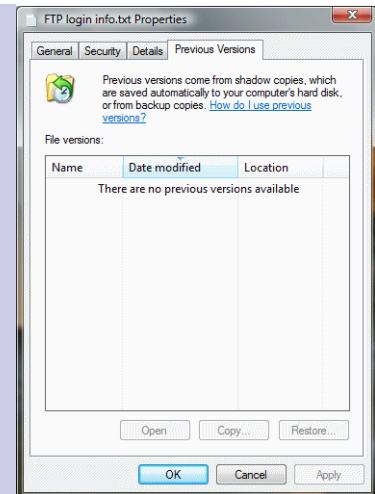
| | | |
|---------------|--|---|
| 8:00—8:30 am | Registration, coffee and complimentary continental breakfast | |
| 8:30—9:15am | General Session | |
| | MAS90 & MAS200—The Road Ahead | |
| | | |
| | <u>APPLICATION TRACK</u> | <u>TECHNICAL TRACK</u> |
| 9:30—10:45am | Oops, I Did it Again! | Advanced Business Insights Explorer 4.3 |
| 11:00—12:15pm | Do This!, Not That—IM & PO | Crystal Reports and Standard MAS90 |
| 12:15—1:00pm | COMPLIMENTARY LUNCH | |
| 1:00—2:15pm | Streamline your MAS90 Processes | Advantages of Paperless Office |
| 2:30—3:45pm | MAS90 Open Panel Q & A | Custom Office Module—Customizer |

We would love to see you there!

Windows Tip

Rollback Your Files (Vista)

In XP, System Restore fixes OS problems but won't do anything if you accidentally save a file rather than quitting. In Vista, it creates "shadow copies" of your files daily; just right-click a Word, Notepad, or WordPad file to roll it back to earlier versions.

**Exciting Summer Promotions from SAGE!****Simplify, Take Control and Reduce Outsourced Costs with the Sage MAS 90 and 200 Do It Yourself Payroll bundle!**

Lower your costs, access data faster and easier -- now is the time to take back payroll with the Sage MAS 90 and 200 Payroll bundle. Purchase Sage MAS 90 or 200 Payroll and Direct Deposit for only \$1,705 -- a savings of \$475!* Plus, add Sage KnowledgeSync Professional for \$0 (\$399 annual service fee required). *\$1,705 promotional price applies to the product portion of the sale only. Regular maintenance applies.

Here's a link for more information on KnowledgeSync (<http://www.sageknowledgesync.com/index.html>)

**Migrate to Sage MAS 90 or 200 Extended Enterprise Suite and receive 0% financing on the upgrade fees!**

For a limited time only, Sage MAS 90 and 200 customers can migrate to Sage MAS 90 or 200 Extended Enterprise Suite and receive 0% financing on the upgrade fees. Sage will reduce the SLP on the order by the appropriate discount (7% for 12-months, 10% for 24-months, or 14% for 36-months) to cover the cost of the financing. Promotion applies to the product portion of the sale only and not to maintenance. Promotion cannot be combined with other promotions and applies only to transactions of \$10,000 or greater.

Here's a link for more information on MAS90 EES (http://www.sagemas.com/smlp/promos/extended_enterprise_suite/default.aspx)

Sage Spring Promotions valid through September 30, 2009. Please contact Jim Steele for more information.

We encourage you to provide us with your feedback, comments and suggestions on how we can better serve your business needs. Contact us at **248-893-1060** or email to jimsteele@orionbas.com

Super Summer Savings from Orion!

Got A Project this summer?

Been putting off your upgrade or service pack(s) installation?

Well now is the perfect time to schedule Orion for projects and tasks you've been putting off! For the months of July and August, we are offering our clients a special discount for buying blocks of time. Our normal hourly rate will be discounted 15% when you buy blocks of time in 5 hour increments.

The pre-paid hours will not expire and will be held on your account. Use them for Orion services, refresher training, implementation, custom reports, hardware installation, network troubleshooting, whatever you like!

Offer good through August 31, 2009. Hurry, offer expires soon.



HARDWARE SPECIAL!

If your company is planning on staying on Windows XP for now and you need to replace some older MAS90/200 workstations, here's a great deal on an HP Refurbished/Excess New Laptop!

HP 6730b XPV Duo2 P8400 2.26GHz 160GB 4GB DVD-CDRW 15.4WXGA BV WLAN BT Rmkt Laptop!

Specifications:

SUMMER SIZZLING SPECIAL PRICING OF \$759.00 EACH

Operating System - Genuine Windows Vista® Business with downgrade to Windows® XP Professional custom installed
 Intel® Core™ 2 Duo Processor P8400 (2.26 GHz, 3 MB L2 cache, 1066 MHz FSB)
 Chipset Mobile Intel GE45 Express with ICH9M
 Memory 4 GB 800 MHz DDR2 SDRAM
 Hard Drive 160 GB 5400 rpm SATA II
 DVD/CD-RW combo
 Integrated Broadcom NetLink Gigabit Ethernet Controller
 Built in Wireless Broadcom 802.11a/b/g/ with Bluetooth 2.0 Wireless Technology
 Battery 6-cell (55 WHr) Lithium-Ion
 15.4-inch diagonal WXGA BrightView Screen



Add Microsoft Office 2007 Standard (Outlook, Word, Excel and PowerPoint) for \$299.00

****Promotional offers and prices are for a limited time or until supply lasts.*

Prices and configurations are subject to change without notice and do not include shipping charges or applicable taxes. HP Refurbished/Excess new units come with the standard HP Warranty and can be extended if you wish to purchase a Warranty extension Care Pack. Call Jim Steele at 248-893-1060 to place an order.

We encourage you to provide us with your feedback, comments and suggestions on how we can better serve your business needs. Contact us at **248-893-1060** or email to **jimsteele@orionbas.com**